

**WARNING! KEEP FOR FUTURE REFERENCE:  
READ CAREFULLY!**

**INSTRUCTION MANUAL FOR  
USE OF CRIB WITH DROP SIDE  
„RELAX”**

**RELAX**



This product **chipolino** is manufactured in accordance with the Product Safety Directive 2001/95/EU of the European Parliament and the Council and to European standard EN 716 Children's cots and folding cots for domestic use, Safety requirements and testing methods as well as the regulations of national legislation including the consumer protection law.

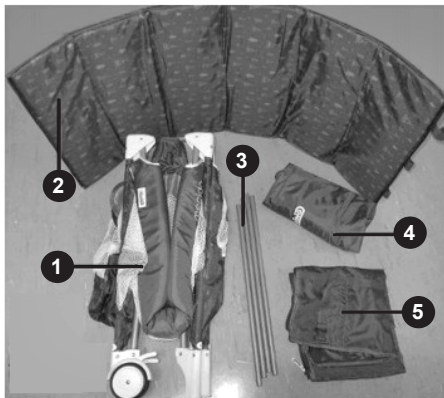
**ATTENTION! WARNINGS!**

- ❖ **WARNING!** NEVER LEAVE THE CHILD UNATTENDED!
- ❖ **WARNING!** MAKE SURE THIS PRODUCT IS NOT PLACED NEAR OPEN FIRE, OTHER SOURCE OF STRONG HEAT SUCH AS ELECTRIC BAR FIRES, GAS FIRES, ETC.!
- ❖ **WARNING!** DISCONTINUE THE USAGE OF THIS PRODUCT, IF YOU FIND DAMAGED, TORN OR MISSING PARTS! USE ONLY SPARE PARTS OR OTHER COMPONENTS, WHICH ARE APPROVED BY THE PRODUCER! The producer does not take any responsibility for the safety of the child when you have not used the proper and original spare parts, approved and provided by him.
- ❖ **WARNING!** DO NOT PLACE OBJECTS IN OR NEAR THE CRIB THAT CAN BE USED AS STEPS OR OTHER DANGEROUS OBJECTS THAT MAY CAUSE SUFFOCATION SUCH AS CORDS, STRINGS, ETC.!
- ❖ **WARNING!** DO NOT USE MORE THAN ONE MATTRESS IN THE CRIB!
- ❖ **WARNING!** USE ONLY THE MATTRESS THAT IS SUPPLIED WITH THIS PRODUCT AND DO NOT ADD ADDITIONAL MATTRESS IN ORDER TO AVOID THE RISK OF SUFFOCATION!
- ❖ ALWAYS MAKE SURE THAT DROP SIDE IS LOCKED IN ITS HIGHEST POSITION WHEN THE BABY IS IN THE COT UNSUPERVISED!
- ❖ ALWAYS make sure that locking mechanisms are fully engaged before use of the crib. Only then the crib is safe for usage!
- ❖ Bottom level of crib is safest for your child. Use it for children who can sit unaided!
- ❖ Use the second level of the crib only for children who CANNOT sit unaided and CANNOT roll or pushup with hands and knees!
- ❖ All fasteners must be always well tightened. They must be regularly reviewed and tighten if needed.
- ❖ The crib must NOT be used for by a child who can climb and hand on it, because he/she can tip it over, fall down and get hurt!
- ❖ The crib must be used for one child at a time!
- ❖ This crib is to be used for a child weighing not more than 15 kg.
- ❖ Assembly, folding and unfolding of the product to be made only by adult!
- ❖ Place the crib only on horizontal and flat surface!
- ❖ Always activate the parking device of the wheels! USE THE WHEELS ONLY WHEN YOU NEED TO MOVE THE CRIB!
- ❖ Do not allow children younger than 3 years near the product during the assembly or disassembly, in order to prevent the risk of injury or swallowing of small parts!
- ❖ The packaging of the product must be kept out of the reach of children to avoid the risk of strangulation!

## MAIN FEATURES

- ❖ Suitable for newborn babies and children aged less than 15 kg;
- ❖ Second level – suitable for younger babies
- ❖ Drop side;
- ❖ Two wheels with parking devices;
- ❖ Side pocket for accessories;
- ❖ Compact folding;
- ❖ Carry bag.

## MAIN PARTS



Please, make sure all described parts below are available:

1. Foldable crib
2. Mattress
3. Tubes for the second level (4 pcs)
4. Carry bag
5. Second level

## ASSEMBLY INSTRUCTION AND FUNCTIONS

This crib is supplied partially assembled. In order to complete the assembly, you don't need any tools.

**ATTENTION!** Follow exactly the instructions given and check the pictures/figures.

**ATTENTION!** AFTER EACH OPERATION, MAKE SURE THAT YOU HAVE FOLLOWED THE INSTRUCTIONS CORRECTLY AND THE FIXING IS STABLE.

**ATTENTION!** In most cases if the fixing is proper you will hear a click sound.

**ATTENTION!** Be careful to avoid finger entrapment during each operation!

Assembly and functions are given in figures 1-6. Use all descriptions below together with figures with the same number.

### 1 – UNFOLDING

### 2 – FIRST LEVEL OF MATTRESS

### 3 – SECOND LEVEL OF MATTRESS

### 4 – DROP SIDE

### 5 – WHEELS AND PARKING DEVICES

### 8 – FOLDING AND PACKING

**Note:** Before folding the crib you must remove the mattress, second level and all other additional accessories.

**IMPORTANT!** Do not push stronger the rails if they don't fold from first time, because you may damage the mechanisms inside! Try again to follow all described actions.



1-1



1-2



1-3



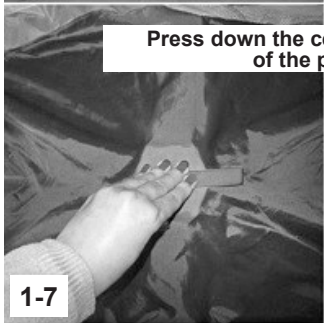
1-4



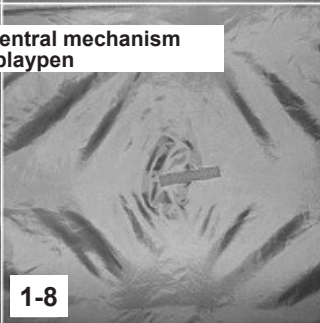
1-5



1-6



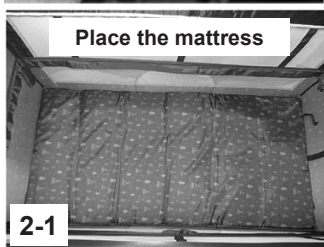
1-7



1-8



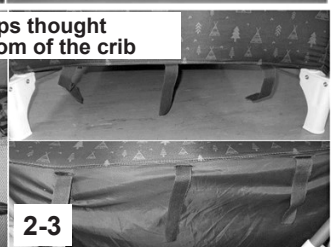
1-9



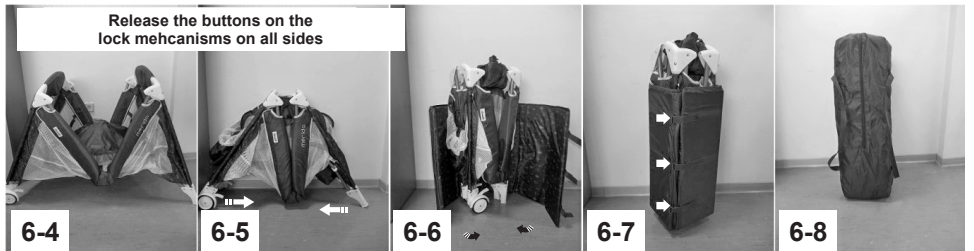
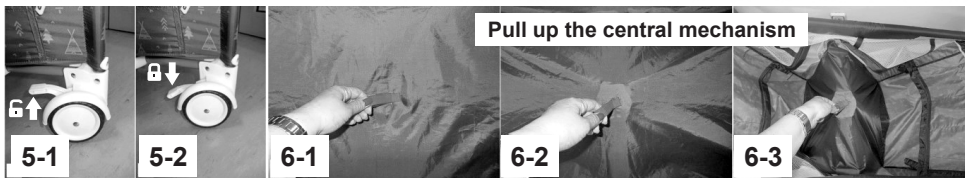
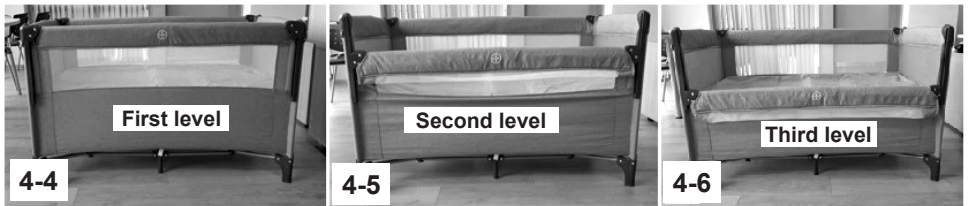
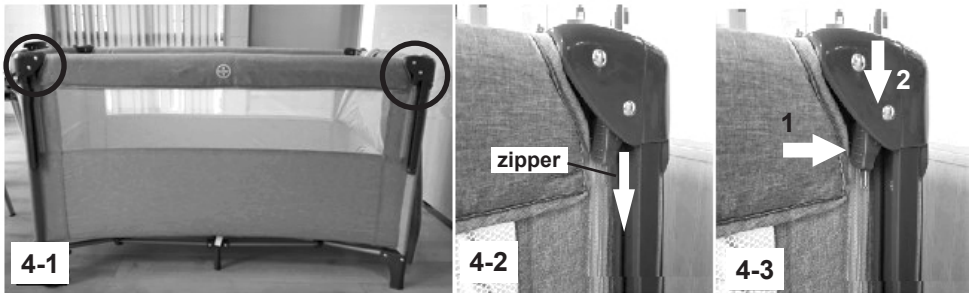
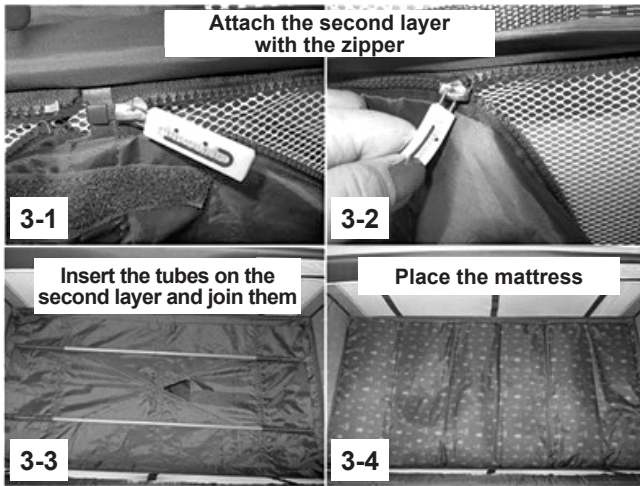
2-1



2-2



2-3



## CARE AND MAINTENANCE

- ❖ Do not push the rails mechanism strongly to avoid damages.
- ❖ Clean the fabrics, plastic parts and metal parts with damp cotton cloth or sponge and mild soap.
- ❖ Do not use abrasive, bleach or other aggressive detergents.
- ❖ Always after cleaning leave the crib and mattress fully dry and after that use them or store them. It may appear mold if you keep them moist.
- ❖ Always store your product indoors. Do not expose to direct environment influence - sun, rain, moisture and high temperature intervals.
- ❖ Please, contact your authorized dealer for problems connected with the use or repair of this product.

### Fabric content:

**Shell:** 100% polyester

**Filling:** 100% polyester



**Materials used:** plastic, textile, metal.

**KOSIRE23xxx**

**CHIPOLINO**

---

Bulgaria, Plovdiv, Str. Golyamokonarsko shosse № 1

[www.chipolino.com](http://www.chipolino.com)